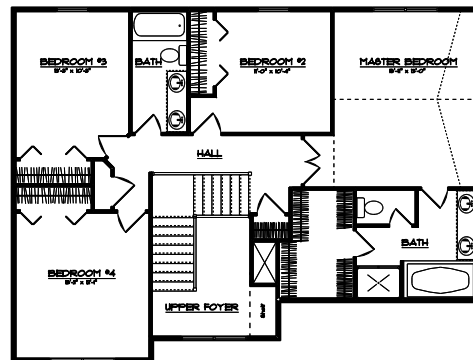
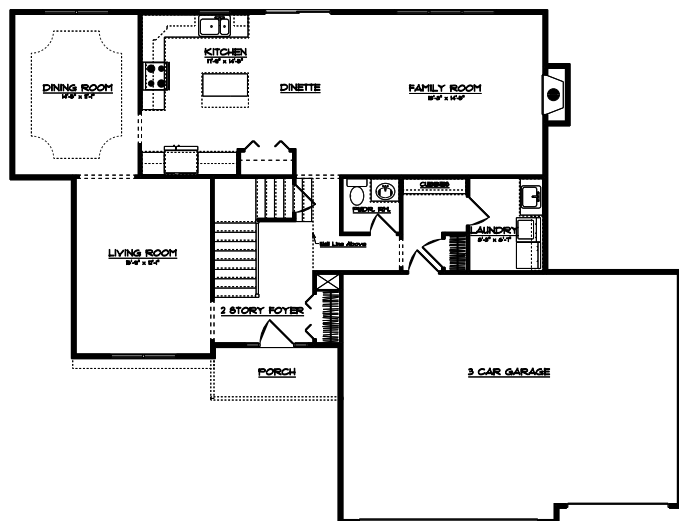




## The Oakton

As you enter this home you are greeted by the open two story foyer with elegant stairway and hallway above looking down. The kitchen features a center island, eat-in dinette, and pantry closet all of which is open to the adjacent family room. The convenient dining room with its tray ceiling, decorative crown moulding, and chair rail can host those large holiday gatherings. The important drop zone from the garage to house is lined with cubbies. The large master suite features a bedroom with a vaulted ceiling and bath with double vanities, whirlpool, separate shower, and abundant closet. All this plus an unfinished basement with future bath rough-in and a three car garage.



### PLAN SUMMARY

|              |                      |
|--------------|----------------------|
| First Floor  | 1,281 Sq. Ft.        |
| Second Floor | 1,169 Sq. Ft.        |
| <b>TOTAL</b> | <b>2,450 Sq. Ft.</b> |



*We reserve the right to modify this plan or price at any time without notice. All plans are the property of Scott Nelson Construction, Inc. Any unauthorized use or reproduction, in whole or in part, of this plan is prohibited. © 2011 Scott Nelson Construction, Inc.*

**1600 Spring Creek Drive • Mahomet, Illinois 61853**  
**(217) 586-4111 • [www.scottnelsonconstruction.com](http://www.scottnelsonconstruction.com)**